



IDEE

Innovative Digital Enforcement Environment



Safety and traffic flow

Strongly increased mobility is placing increasingly higher demands on road users. Their safety is endangered. Small disruptions due to accidents, for example, can have large consequences for traffic flow.

Although infrastructure measures sometimes help to make roads safer, it is nevertheless still necessary to actively promote safety. The relationship between accident risk and speed has been emphatically proven. High-speed driving leads to more injuries and road deaths. The immaterial and economic damage is substantial.

Peek offers road maintenance authorities and the police an effective means to increase safety and traffic flow within and outside of the city. IDEE, Innovative Digital Enforcement Environment, is a flexible and modular system which can measure speed, both on location and over sections, and red light infringements.

IDEE Speed Enforcement

IDEE is an autonomous system which registers the speed of all passing vehicles from a fixed position at the side of the road. When a speeding incident is detected, the registration number is automatically recorded and the class of vehicle is determined.

The information is then recorded in a 'speeding file' which is sent directly or in a batch to the processing system of the relevant police region for further processing. A single system can simultaneously process oncoming and off-going traffic over a maximum width of four traffic lanes.

IDEE Red Light Control

According to your wish, IDEE can be configured as a speedometer and/or red light enforcement system. In the latter case, from a position near to a crossroads it does not just measure the speed of all passing vehicles but also the status of the traffic lights.

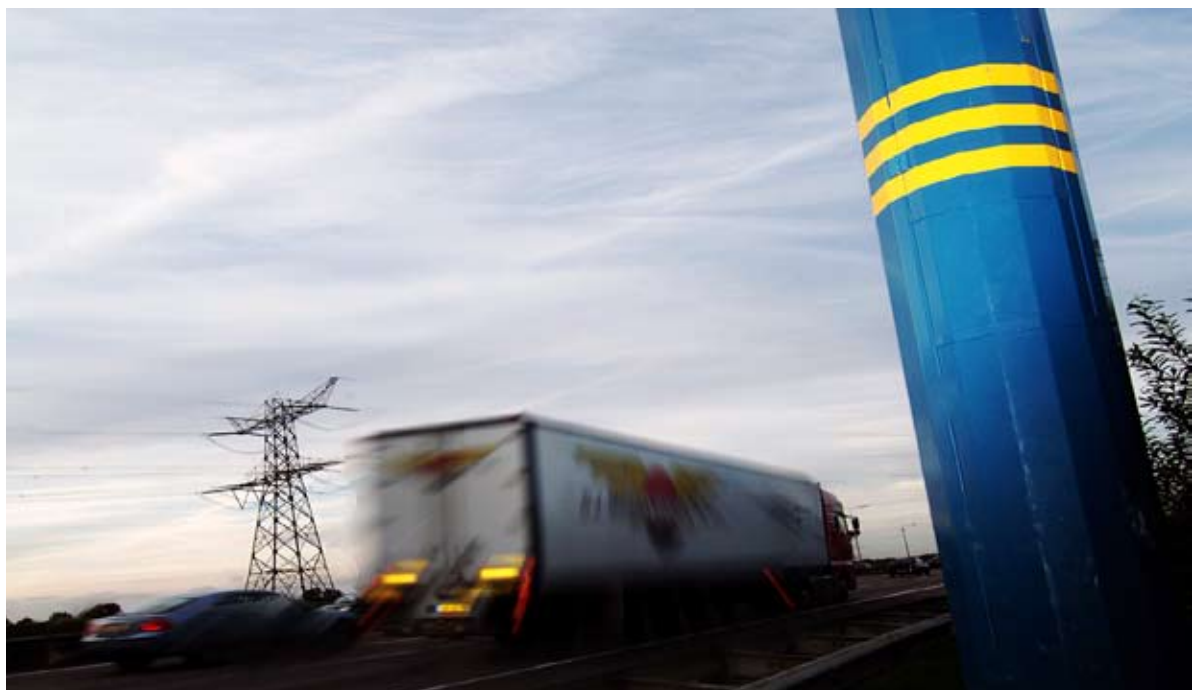
When a vehicle jumps a red light, two digital photos of the vehicle are taken. The registration number is automatically recorded and the class of vehicle determined. The complete set of details is then sent digitally to the regional police for further processing.

If, at the same time, an incident of speeding is detected, a separate speeding file is created. A single system can simultaneously process away-going traffic across a maximum of four lanes with traffic lights.

IDEE Section Control

The most recent development consists of so-called 'speed section control'. Two IDEE systems (flash posts) combine to calculate the speed of a vehicle across an entire road section. In the event of a speeding incident, a speeding file is again created.

IDEE Section Control is the ideal solution for large inner-city roads or provincial roads where an individual enforcement post does not really help. This allows longer sections of road to be protected.



With this solution, it is also possible to relieve residential neighbourhoods of noise and air pollution through the enforcement of a lower maximum speed limit.

Peek is introducing IDEE Section Control onto the market in 2008.

How does IDEE work

IDEE detects passing vehicles by means of loop sensors in the road surface. The speed of the vehicle is ascertained, as is the vehicle category and the vehicle class. The maximum speed is configurable for each vehicle class. The level of the fine can differ according to the vehicle class.

In the event of a speeding incident, a digital photo is taken for the automatic recognition of the registration number. In addition, a digital overview photo is taken for the recognition of the vehicle in its surrounding environment.

A complete speeding set with the date, time and speeding code is sent to the relevant enforcement agency (mostly the police) for further processing.

See the photos below with the details of the speeding incident, the date and time and the details of the measurement unit in the black bar.

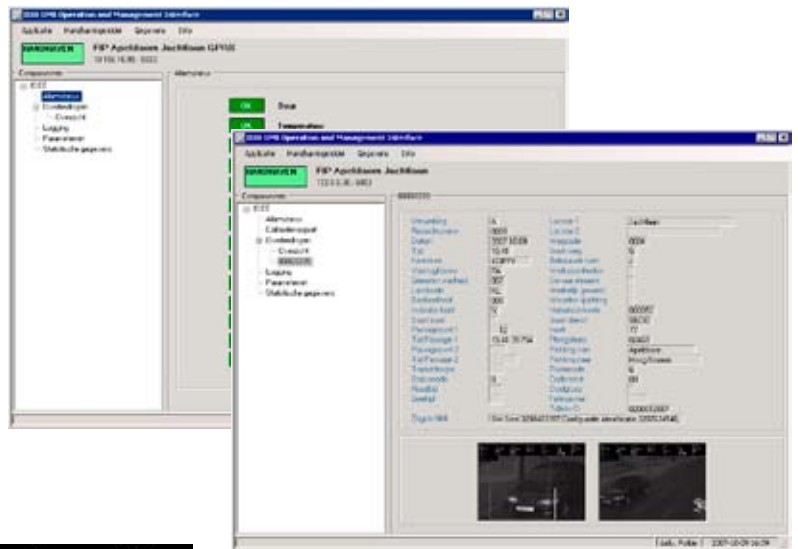
Control and operation

The system is controlled remotely by means of Operational Management Interface (OMI). Only authorised users can work with the OMI. The OMI makes it possible to monitor and change the status of a system.

Depending on the level of authorisation, the various parameters of the system can be requested and introduced. The police use the OMI to switch the IDEE systems 'on' or 'off' and monitor the speeding incidents.

Alarms

In order to combat vandalism and observe it in time, the system has been equipped with a number of sensors, such as a smoke alarm, tilt, temperature and door switches. This allows the regional police to be directly alerted by means of an e-mail or sms.



Date
2007-05-31
Loop
250 cm
Serial Nr.
9586 171 00010

Cat.
TP7207
Direction
ONCOMING
SW Seal
2200043024
Lane
2



Specificaties



Power AC

Voltage	195VAC < U < 253VAC
Frequency	50Hz
Current	<2A

Environmental characteristics

Operating temperature	-10°C .. +60°C
Storage temperature	-10°C .. +60°C
Relative humidity	5 .. 95%

Communication

Wireless	GPRS/UMTS
Network	ISDN/DSL

Security

Arson	Smoke alarm, temperature alarm
Forced entry	Door contact alarm, vibration alarm
Removal	Tilt alarm

Accuracy

2-100km/h	3km/h
100-250km/h	3%

Capacity

Number of speeding incidents	>1000 per day
Number of traffic lanes	Max. 4 in both directions

Approvals

IDEE is certified by the Nederlands Meet Instituut (Dutch Measurement Institute).



Basicweg 16
3821 BR Amersfoort
Tel.: (+31) 33 454 1777
Fax: (+31) 33 454 1740
E-mail: info@peektraffic.nl
Internet: www.peaktraffic.nl

Part of the stock exchange listed Imtech